

# Career. Community. Connection.

PRESENTATION BY CHRIS WINDRIM

# PRESENTATION OVERVIEW



## CAREER

Chris will explain his career path so far including the success, changes and failures.



## COMMUNITY


We will then dive into community and look at the places where you fit and can grow.



## CONNECTION

Networking is an important piece to promote growth and seek those who will lift you up.





At the end of the day people won't  
remember what you said or did, they will  
remember how you made them feel.

Maya Angelou



With knowing our topic,

# What would you like from today's presentation?

Go to [canva.live](https://canva.live) and use the code above

Let's have a group discuss to ensure that we make the most out of the next two hours.

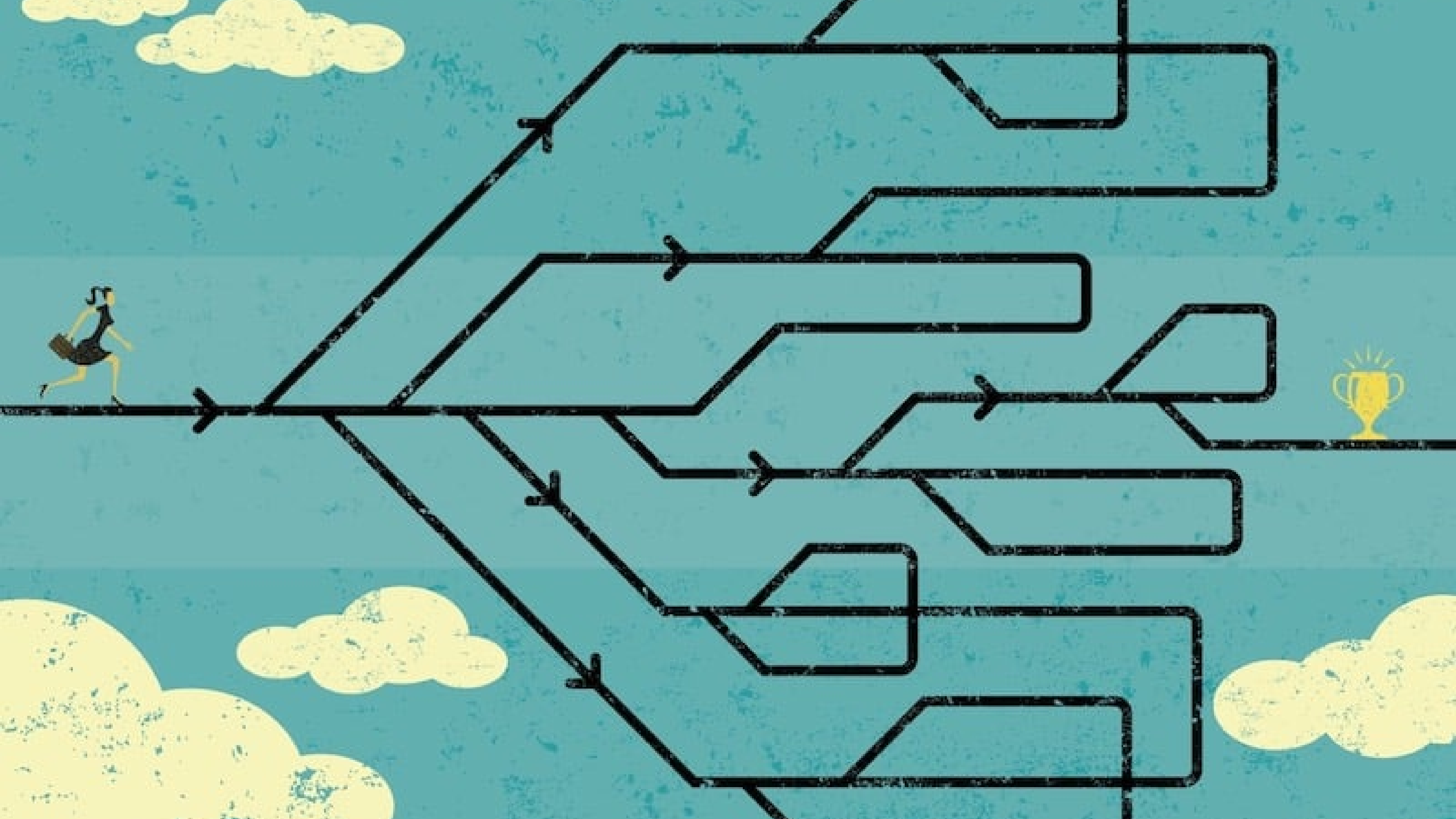




# Career.

Let's start here, that way you'll know why I'm here.







# GROWING UP IN RED DEER

A brief history of me

1992



I was born in Edson, AB and quickly arrived in Red Deer, AB

2000



Attended Normandeau Elementary and participated in scouts and soccer

2003



Attended Glendale Middle School and participated in BMX Racing

2006



Attended Lindsay Thurber High School and participated in Red Deer Royals, Rugby, and lots of volunteering

2010

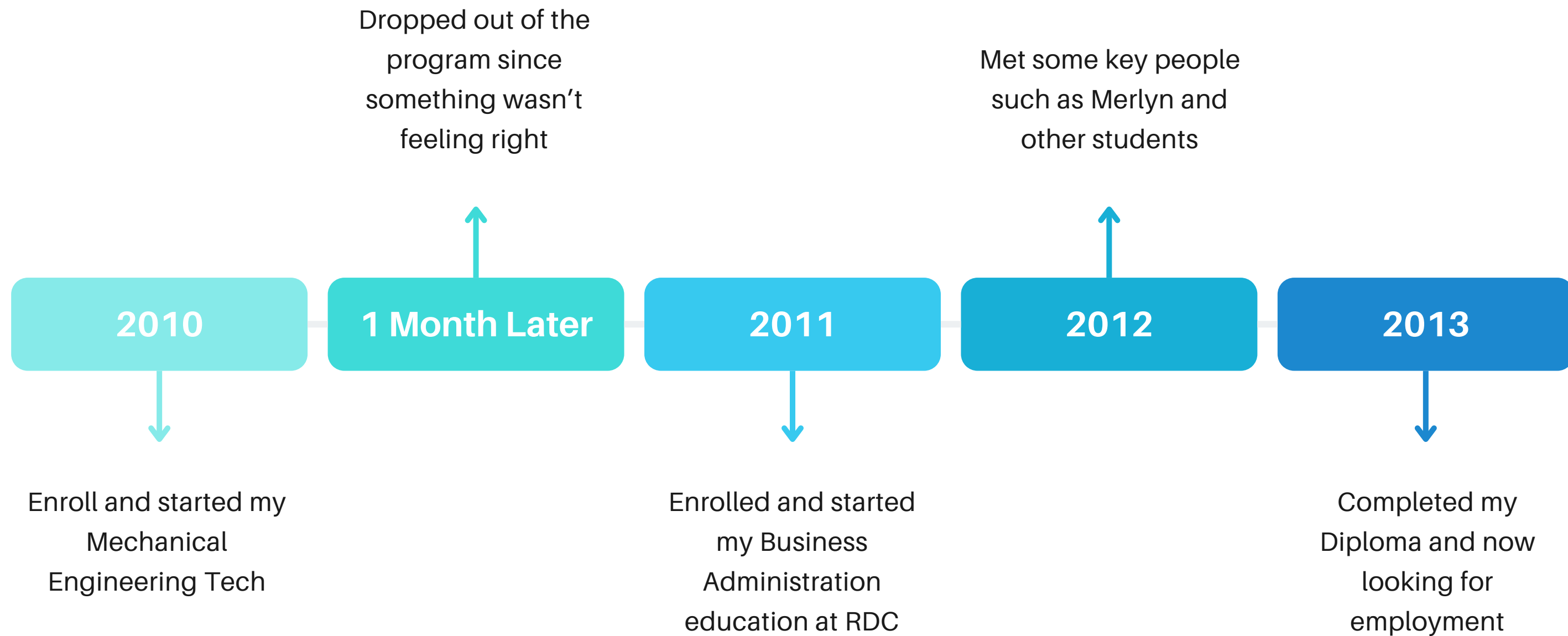


Graduated High School and was working full time to save for Post Secondary



# POST SECONDARY PATH

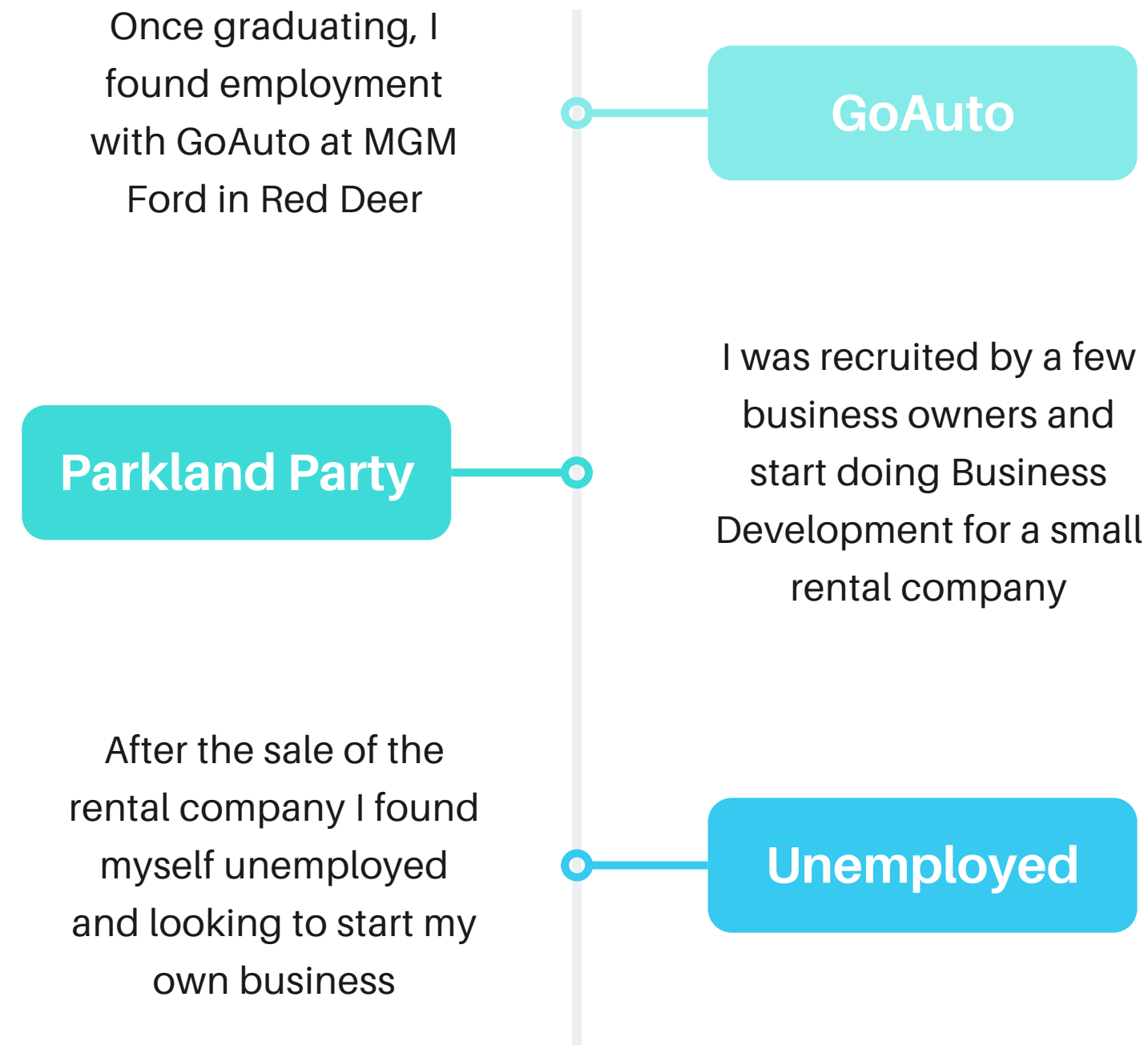
NAIT and RDC





# START OF CAREER

A few first jobs post-graduation



# FOCUSING CAREER

Finding my fit

This was a large success and was tough to earn the opportunity. I had to rely on contacts and community to ensure that I achieved success in this role.

**BILD Central  
Alberta**

**Red Deer  
Chamber of  
Commerce**

Recently, I took over as Executive Director for BILD Central Alberta. An organization who has an incredible history in Central Alberta since 1956.



My why, is community and family.

# What is your why, your driver behind what you do?

Go to [canva.live](https://canva.live) and use the code above

Let's have a group discuss to ensure that we make the most out of the next two hours.



# Community.

A sense of belonging.





A community, a family, is a group of people who share common stories. The health of any community depends directly on the health of the stories the community embraces.

Daniel Taylor



# What does community mean to you?

Go to [canva.live](https://canva.live) and use the code above

Let's have a group discuss to ensure that we make the most out of the next two hours.



# How can you find a place within your community?

- Get involved with something that you're passionate about,
- Volunteer, volunteer and volunteer
- Show up and be present
- Look up your Chamber of Commerce, Rotary, Foundations and attend meetings
- Give your time for good causes

All of these points aren't always easy but all will allow you to be involved, and understand your community. With persistence and time all will become easier.



# Building Bridges

No one can build a bridge alone. If two different places are required to meet then a bridge must be created and a relationship fostered.

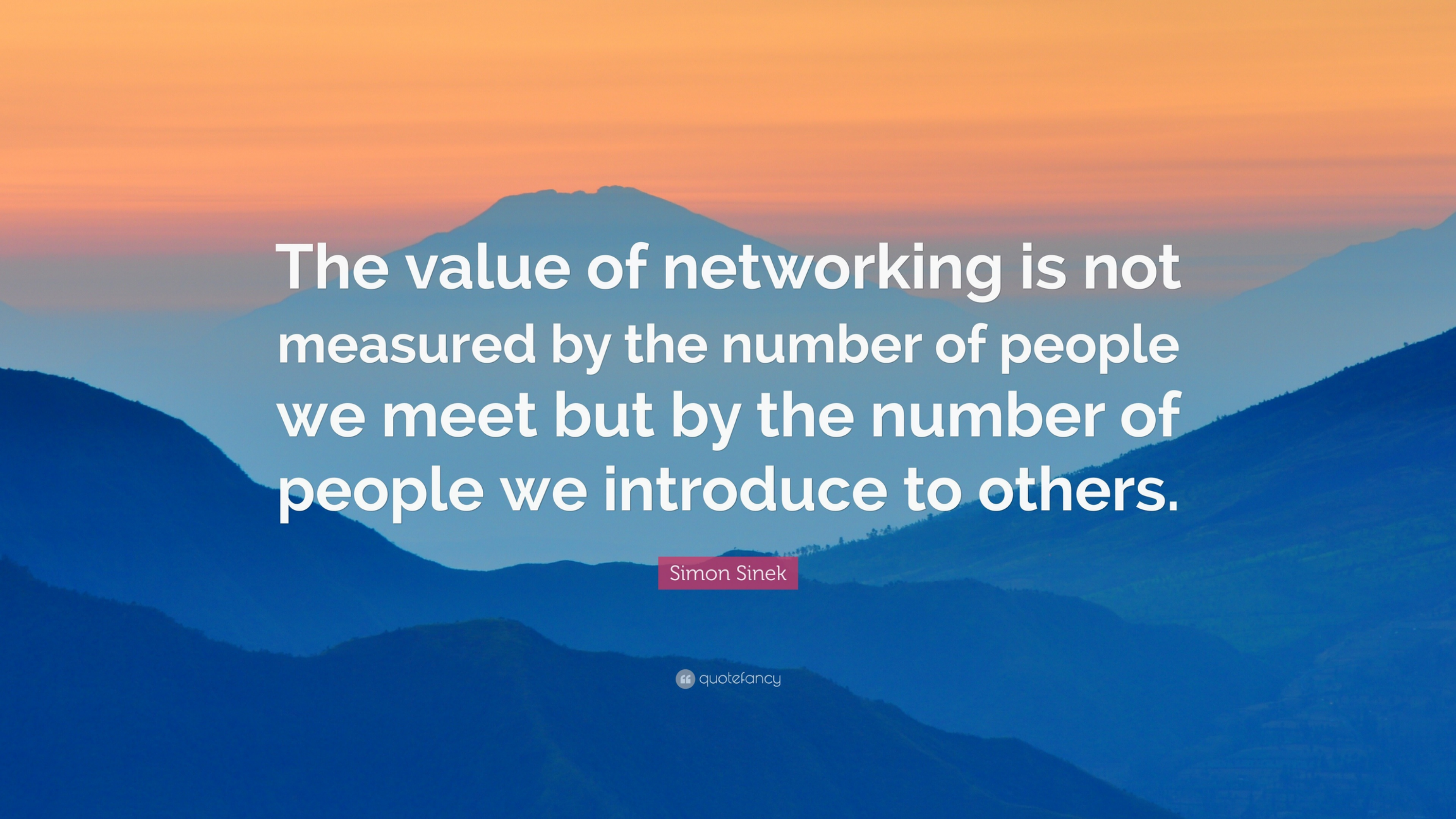
This is a fundamental practice for both community and connection.



# Connection.

Networking. Not as easy as it seems.





The value of networking is not  
measured by the number of people  
we meet but by the number of  
people we introduce to others.

Simon Sinek



# Connection = Networking

There will be no perfect way to network and it's tough at the best of times but there are many reasons why everyone talks about it!

- Have you networked without knowing it?
- Recognize it and create opportunity
- Remember your story and sell yourself
- Building relationships
- Realize the goal and just try!

Networking = Building of Social Capital = Currency of our age

# Your turn!

This is now your time to participate and please follow the following format:

- **Your Name,**
- **Why are you here today?**
- **What is something you enjoy about winter?**
- **What is an aspiration of yours?**
- **How can someone else help you reach your goal?**

This is your opportunity to network yourself to the group and find possible ways to support each other.



# Humans are wired for connection

We are all wired for connections and just remember to take little steps at first. The more you practice, the better you will become resulting in better, deeper, conversations which can lead to greater opportunities.

Remember to listen and actively participate in the conversation. Once you have made a connection remember that feeling.

**You and your network will grow together.**



# Contact Info.

**Chris Windrim**

*Executive Director*

BILD Central Alberta

(403) 506 - 8317

[chris@bildcentralalberta.ca](mailto:chris@bildcentralalberta.ca)

# Thank you.

I really appreciate your time today. Any questions?